



...a place to learn & grow in the arts

503-365-3944

info@willametteartcenter.com

WHAT'S HAPPENING AT THE WAC?

Artisan Village

We are currently seeking artists and musicians for Artisan Village during the State Fair, August 24 through September 3. Hours are 10:00am to 8:00pm daily. The village will again be located in the Garden Area of the fairgrounds. Thousands of people visit the Artisan Village each year, and it's a great opportunity to sell your art or share your musical talent. The 2018 application will be online soon. Contact Roger Williams: salem.wac.mail@gmail.com for more information.

New Board Officers

The following board members were elected for the 2018 term:

- Jim Ransom, President
- Ed Daly, Vice President
- Dave Jarrell, Secretary
- Karen Hackney, Treasurer

Empty Bowls

We are proud to announce that we have again donated \$20,000 to the Marion Polk Food Share to help feed the hungry in our community. A huge thank you to everyone who made bowls, glazed, fired, boxed up, counted, priced, set up, worked, and purchased bowls at the sale. A special thank you to our loyal sponsors: The Grand Hotel, John Gear Law Offices, and Salem Electric. It was a fantastic, very successful effort!



Kiln Update

As most of you know, we have ordered and received our new 28/18 shuttle kiln from Bailey. We have been busy uncrating and assembling it in the annex, no small feat. This design will allow Nikki, our studio tech, to load the cart outside the kiln, thereby saving her back, and then just roll it in. She will be able to fire manually the first few times and then automatically thereafter. We will always be able to manually fire should we so desire.

Remaining tasks are installing the sheet metal chimney, exhaust fan, and the gas lines. Arrangements will be made this week for that. We have also had a new concrete path poured, running from the studio to the annex. We will be test firing our glazes to ensure a predictable outcome every time.

A special thanks to volunteers Fred, Dave, Gordy, Ed, and Rick for their help in the uncrating and final assembly. We are grateful to the Miller Foundation and the City of Salem TOT for grants which made the kiln purchase possible.

—Roger Williams



Your Hot Pots

Cool pots are being fired all the time, and we don't get to see them. Do you have pots glazed at the studio that made you say "WOW!" (in a good way) when you got them out of the fire? Send us a jpg picture to salem.wac.mail@gmail.com to share in our next newsletter. What glaze(s) did you use? Combination? Technique? The more info, the better.

Glazing Ideas: Tips for Tackling Texture

Have a piece with some great texture and aren't sure how to finish it off? Below are some glazing ideas to make your surface decorations stand out!

General Tips: Translucent glazes, glazes that pool, or glazes that "break" (produce different colors depending on their thickness) all work well to accentuate textures. Which type glaze to choose depends upon the depth of texture—is it shallow or deep?—and the desired effect—bold or subtle? In general, translucent glazes work best over faint textures, while glazes that pool or break can be used over deeper textures.

Translucent glazes are a safe bet for faint textures because they won't obscure shallow designs. Some examples of translucent glazes at the WAC include:

- *Amber Celadon (Figure 1)
- *Don's Red (Figure 2)
- *Cascade Green
- *Green Celadon

Glazes that pool tend to emphasize surface textures by settling into depressed areas while remaining thin in areas of higher relief. These glazes work well over any texture, though for best results, try going thinner on fainter textures.

Examples at the WAC include:

- *Albany Bleach (Figure 3)
- *Fake Ash Blue (Figure 4)

Glazes that break offer an easy way to show off bold textures. These glazes create beautiful effects when the deep contours of a design result in varying depths of glaze on a piece. These varying depths create different colors, enhancing the texture beneath. Examples at the WAC include:

- *Woo Blue Brown (Figure 5)
- *Temmoku
- *Blue Crystal

—Amanda Ohrn

Figure 1. Amber celadon over a shallow natural texture.



Figure 2. Don's Red over faint texture.

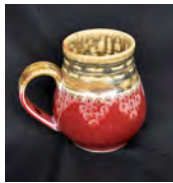


Figure 3. Albany Bleach pooling in and around faint texture.

Figure 4. Fake Ash Blue pooling into bold-textured lettering.

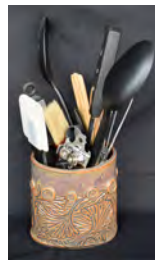


Figure 5. Woo Blue Brown, showing its ability to break over heavy texture.

WAC Bus Ads

Keep your eyes peeled the next time you are stuck behind a Cherriot bus. Soon you might spot a plug to head to the WAC to Make Something! The WAC bus will change routes several times a year. We will also have an ad on the side of another bus, designated for non-profits. Thanks Karen Hackney for bringing this idea to life and Marsha Minten for the cool saying.



- February 17 with Nikki Svarverud—Taking the mystery out of cone 10 glazes (bring a bisque piece)

Workshops are 1:30-3:30 for \$25. Supplies will be provided.



Making tools to decorate pots in Jim's workshop



Brushes made in Pam's workshop

Family Clay Sunday

We're excited to announce that Amanda Ohrn has been hired as an instructor to assist Joseph Merino during Family Clay Sundays. Joseph welcomes volunteers to join the fun from 12:45 to 3:00 any Sunday and thanks those who have volunteered in the past.



Got Yours Yet?

If you haven't already, be sure to become a 2018 member today! The membership is effective October 1, 2017 through December 31, 2018. Enjoy the benefits and support the Willamette Art Center.

willametteartcenter.com

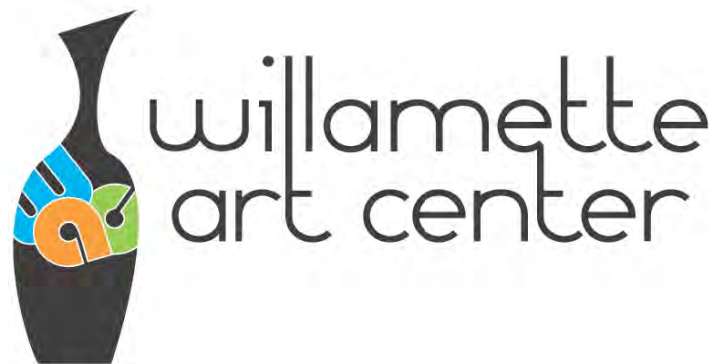
(Support and Donate) 503-365-3911
Membership - \$25

Are You Interested?

The center needs a dedicated volunteer, experienced using Word Press, to keep our website updated. The tasks will require 3-4 hours per month. If you are interested and willing, please send an email to salem.wac.mail@gmail.com.

Workshops

- February 10 with Karen Hackney—Decorate with Bubble Glaze (bring a bisqued piece)



All call for artists:

Art Jam

at the Marion County Fair!

Who: Arts & crafts artists from Marion County or surrounding area.

What: Bring a 10x10 booth, display your artwork & give optional demonstrations! Artists keep all proceeds!

Cost: \$100 fee for all 4 days, + \$45 for electricity if desired.

Where: Willamette Art Center at the Oregon State Fairgrounds.

When: July 12-15:
10:00am-8:00pm

Apply: Print and follow instructions on our application from our website.

Deadline: May 31st:
www.willametteartcenter.com